

The logo for CEA (Commissariat à l'énergie atomique et aux énergies alternatives) features the lowercase letters 'cea' in a white, rounded, sans-serif font. A thin green horizontal line is positioned directly below the text. The logo is centered within a red square background.The logo for PASREL imagerie features a stylized blue and green arc above the word 'PASREL' in a bold, blue, sans-serif font. Below 'PASREL', the word 'imagerie' is written in a smaller, blue, sans-serif font. The entire logo is centered within a white rectangular background.

In vivo imaging to de-risk your medical innovations

The logo for LRQA certification is a white square with a black border. Inside the square, the text 'LRQA' is at the top, 'CERTIFIED' is in the middle, and 'ISO 9001' is at the bottom, all in a black, sans-serif font.

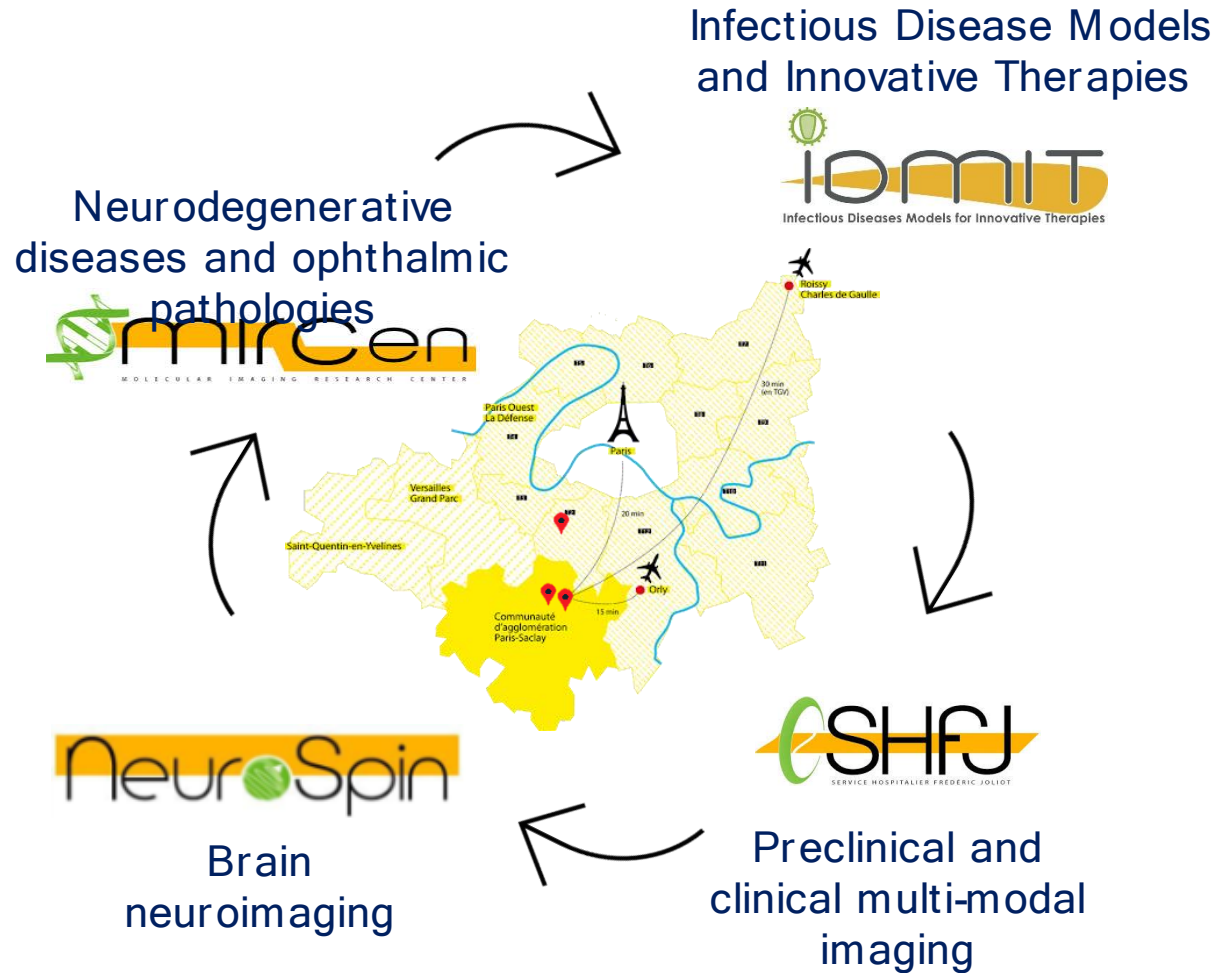
CEA

- Technological Research for Energy and Life Science
- National Research Organization
- ~20 000 staff, ~2 000 PhD students

PASREL-imagerie

- CEA centers dedicated to translational in vivo imaging
- A strong and long-standing know-how
- A facilitated access to PASREL-imagerie platforms and expertise for drug development industry





- Unique in vivo imaging platforms and expertise: MRI, PET, ultrasound, optical and hybrid imaging

- From POC in animal to drug development in patients

- A rich and complementary research environment

Radiotracers

- ✓ 3 cyclotrons: ^{11}C , ^{18}F , ^{15}O , ^{68}Ga
- ✓ Access to ^{89}Zr , ^{177}Lu and ^{64}Cu
- ✓ Labelling of small and large molecule

**PET****Multimodal Imaging**

PET-CT / PET-MRI / PET-US /
SPECT-CT / MRI-US

**Radiopharmaceuticals****PET****Multimodal Imaging**

PET-CT / PET-MRI /
SPECT-CT

**Preclinical research****Clinical Phases****Two-photon microscopy**

Multiple labeling

**MRI**

3T / 7T / 17.2T

**Ultrasound**

Imaging & Therapeutical

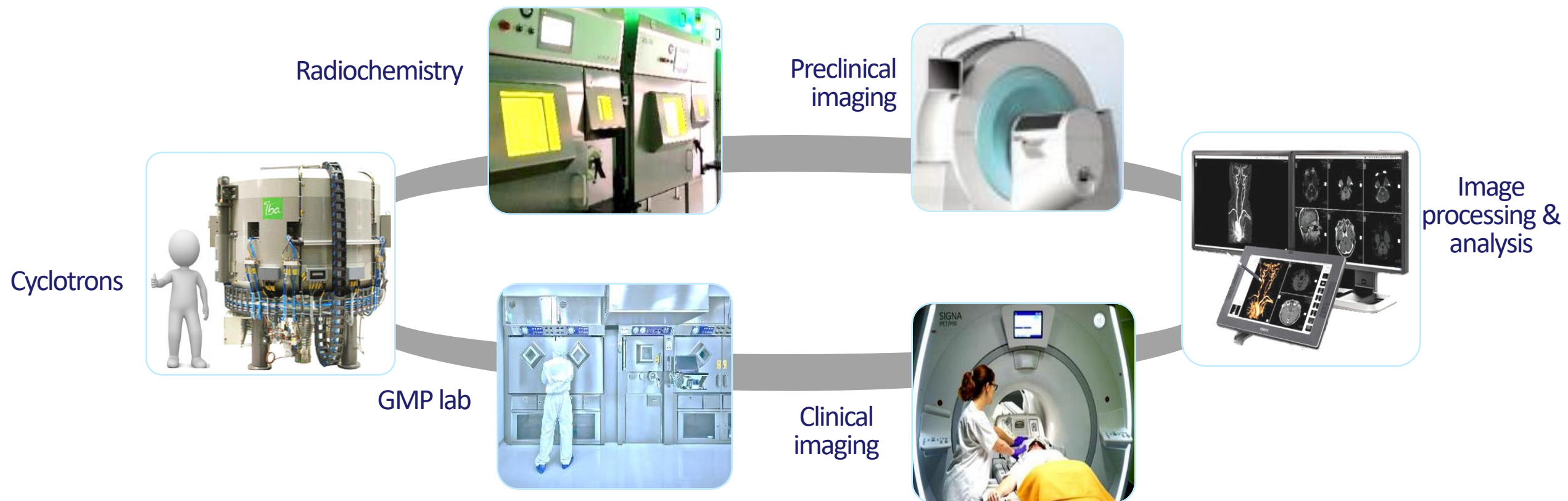
**MRI**

1,5T / 3T / 7T / 11,7T

**Ultrasound**

- ✓ BSL1 to 3 environment

Expertise for translational innovation in imaging and health



On demand molecular
labeling

Small molecules < 1 000 Da

Macromolecules > 1 000 Da

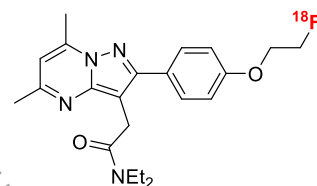
Protein / Antibody - ^{89}Zr , ^{18}F

Produce
isotope

Radiolabel

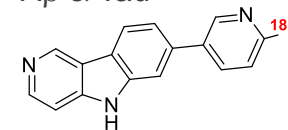
QC

Neuroinflammation

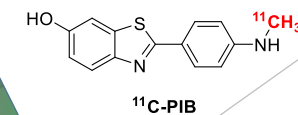


^{18}F -DPA-714

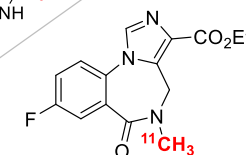
A β & Tau



^{18}F -AV-1451 / ^{18}F -T807



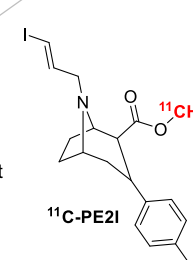
^{11}C -PIB



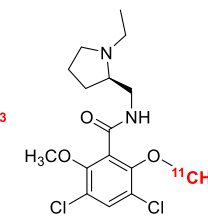
^{11}C -Flumazenil

H_2^{15}O

Neurology

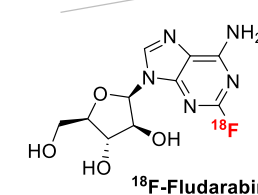


^{11}C -PE2I

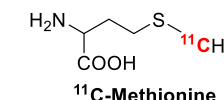


^{11}C -Raclopride

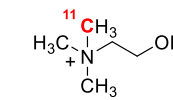
Oncology



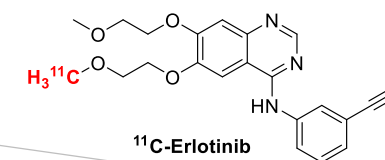
^{18}F -Fludarabine



^{11}C -Methionine

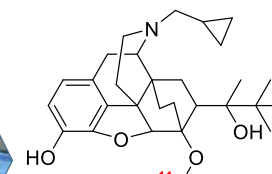


^{11}C -Choline

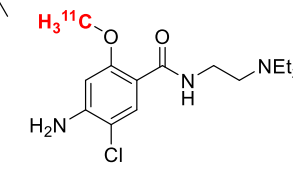


^{11}C -Erlotinib

Pharmacology



^{11}C -Buprenorphine



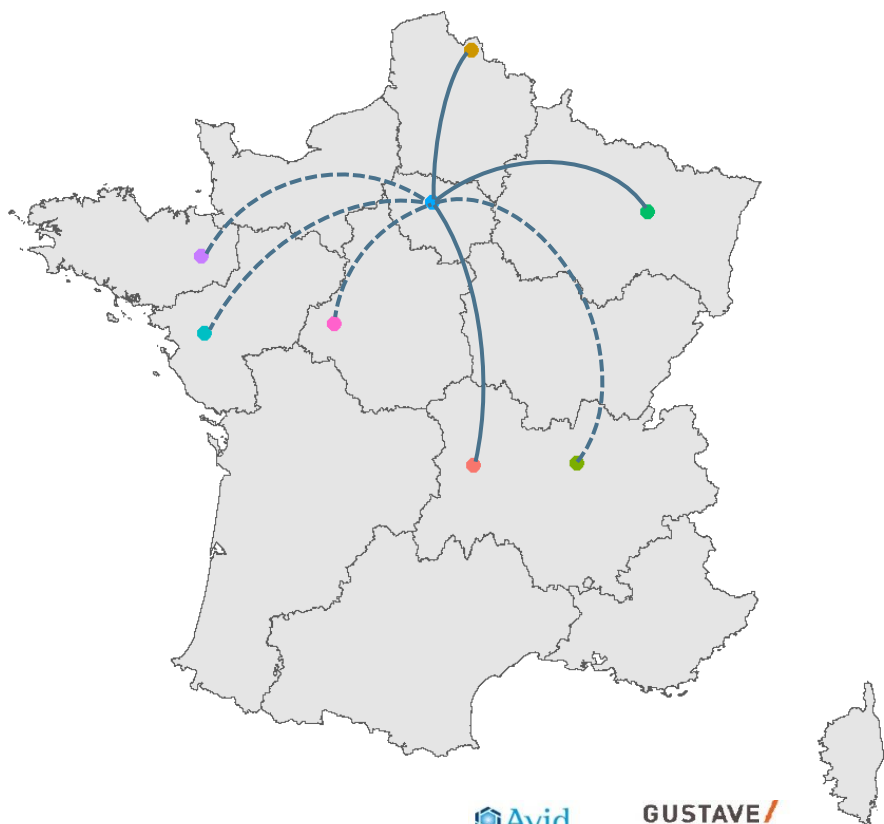
^{11}C -Metoclopramide

Radiopharmaceutical
manufacturing for
research

CaOR platform

Service Hospitalier
Frédéric Joliot (SHFJ)





17 protocols
8 partner hospitals
Collaborations



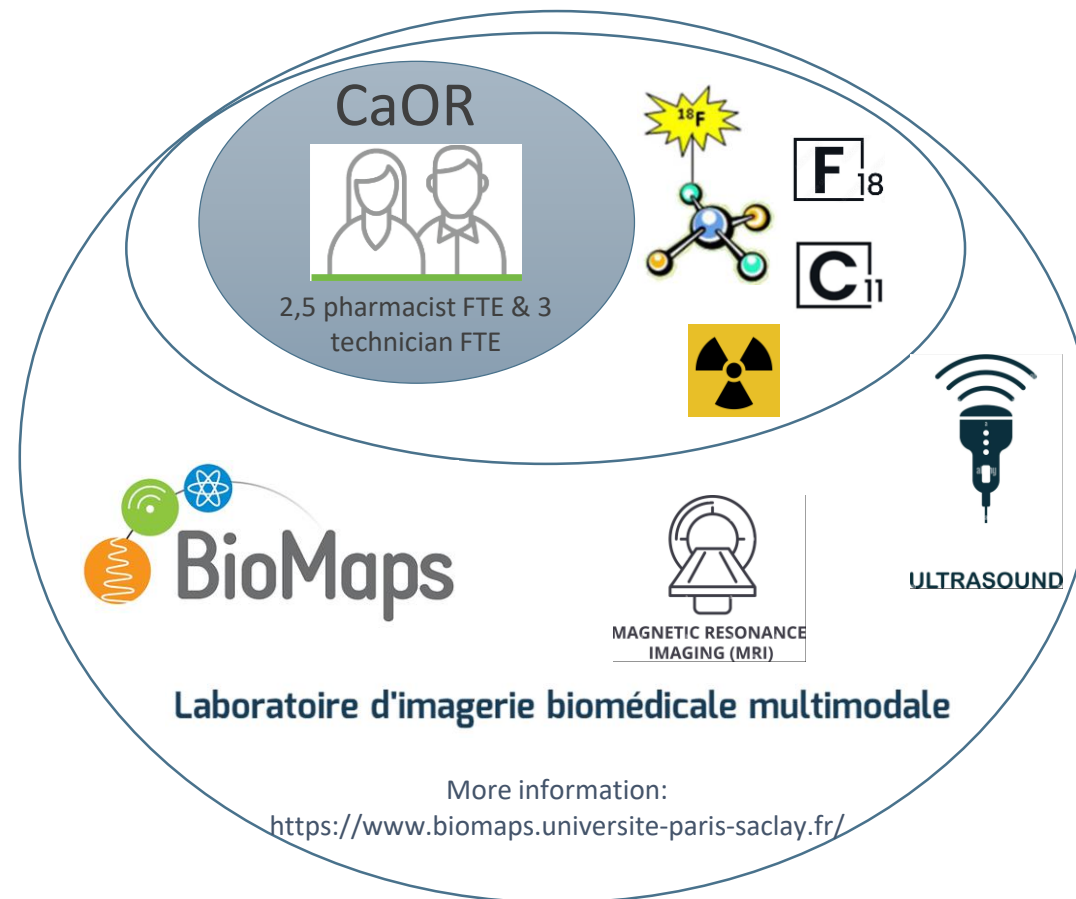
GE Healthcare



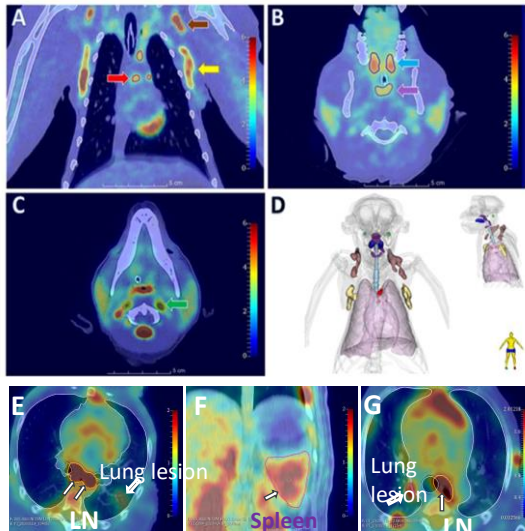
Centre hospitalier
Sainte-Anne



ASSISTANCE
PUBLIQUE

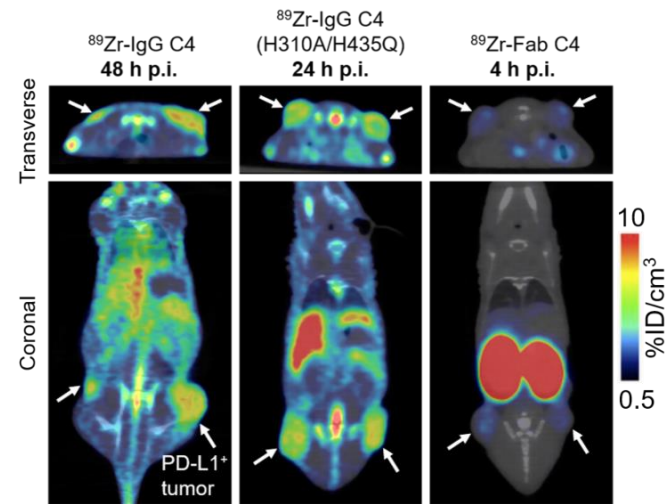


PET-CT



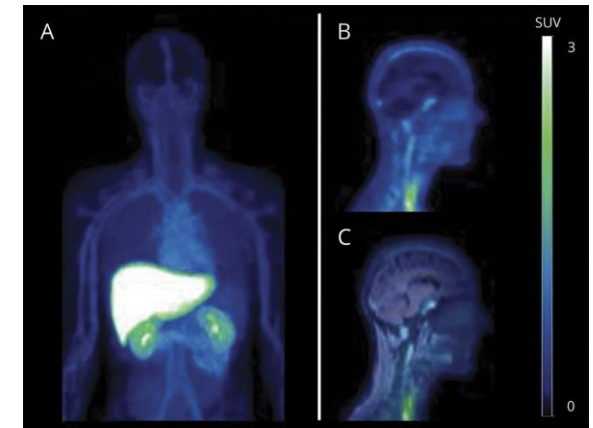
Infection effect of Sars-Cov-2 in animal - $[^{18}\text{F}]\text{FDG}$

Immuno-PET



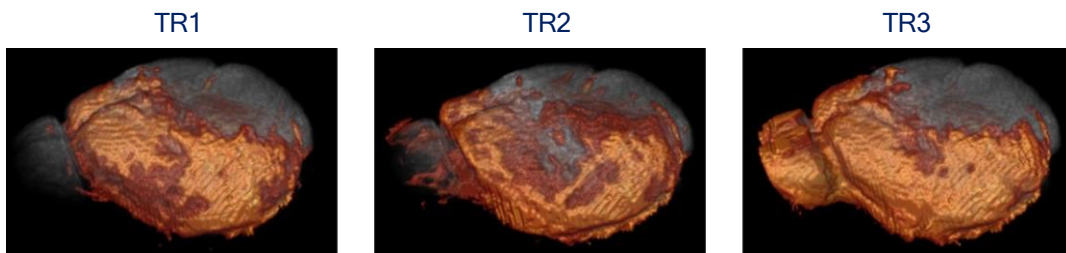
Characterization of 3 ligands derived from the anti-PD-L1 IgG1 using ^{89}Zr in a xenograft model

PET/ MRI



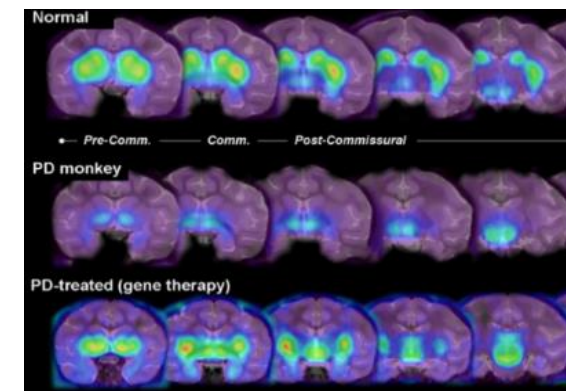
Biodistribution of marketed drug PET Microdosing - $[^{11}\text{C}]\text{Glyburide}$

Mn2+ Enhanced MRI



Drug effects on functional neuroimaging in mouse

PET



Gene therapy efficacy on a preclinical model of Parkinson's disease - $[^{18}\text{F}]\text{6-FMT}$

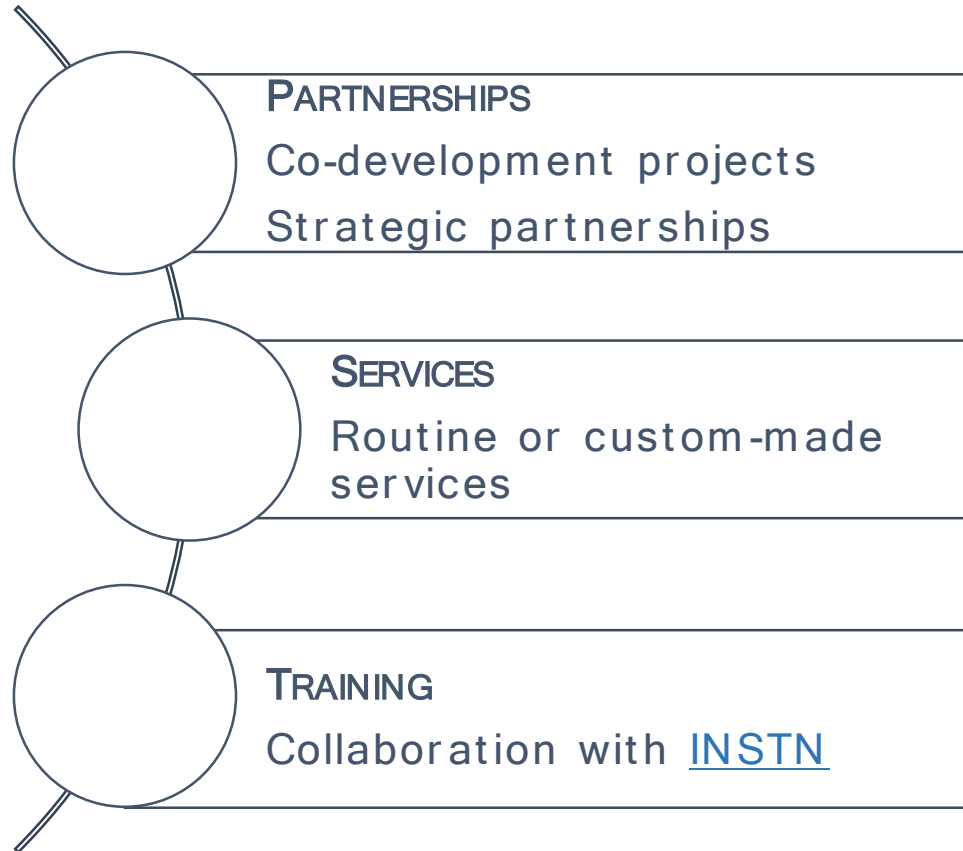

Preclinical research

Clinical Phases

BSL 1-2-3 ENVIRONMENTS
FULL SET OF OFFER

Animal models	Genomics	Viral vector production	Anatomopathology				Anatomopathology
General and stereotactic surgery	Proteomics	Biotherapy	Immunohistochemistry	Genomics	MEG		Immunohistochemistry
Cognitive and motor behavior	Metabolics	Aptamer	Optical imaging	BioBanking	EEG		Optical imaging
Flow & Mass spectrometry	Biochemistry	BioBanking	Ex vivo imaging	Proteomics	Machine learning & IA		Ex vivo imaging
Cell sorting							

RESEARCH EXPERTISE
Neurodegenerative diseases
Oncology
Chronic mental illnesses in adult
Research protocol management
Ophthalmology
Infectious diseases
Neurodegenerative diseases
Brain development pathology
Brain tumors
Normal aging



A quality management process

- A dedicated manager
- Instrument maintenance and calibration
- Data security, confidentiality and storage
- Project traceability
- Formalized protocols
- Compliance with ethical and regulatory aspects
- Staff competence and empowerment



World-renowned key players with long-standing collaborations with industry




FOUR MULTIDISCIPLINARY CENTERS

Infectious Disease Models and Innovative Therapies

Neurodegenerative diseases and ophthalmic pathologies

IOMIT
Infectious Diseases Models for Innovative Therapies

mircen
MULTISCALE IMAGING RESEARCH CENTER



NeuroSpin
MRI neuroimaging

SHFJ
Preclinical and clinical multi-modal imaging

STATE-OF-THE-ART TRANSLATIONAL IN VIVO IMAGING

In vivo imaging platforms and expertise:
MRI, PET, ultrasound and hybrid imaging



From preclinical POC to drug development in patients

A CUSTOM-MADE OFFER

Services

Partnerships

Training



+33 6 17 86 48 70



bd@pasrel-imagerie.com



[Pasrel Imagerie](#)



[PASREL-PROJECT](#)



4 Pl. du Général Leclerc - 91400 Orsay